

Bass in C

# Continental Divide

(Orchestra)  
*Patterns at 14,000 Feet*

David Rosenboom  
Denver, 1964

Play patterns in order repeating each a large number of times. Play at different temporal shifts or "phases," all playing the same tempo. Stay in the same octave. Do not multiply or divide speeds.

## Fast

Bass in C



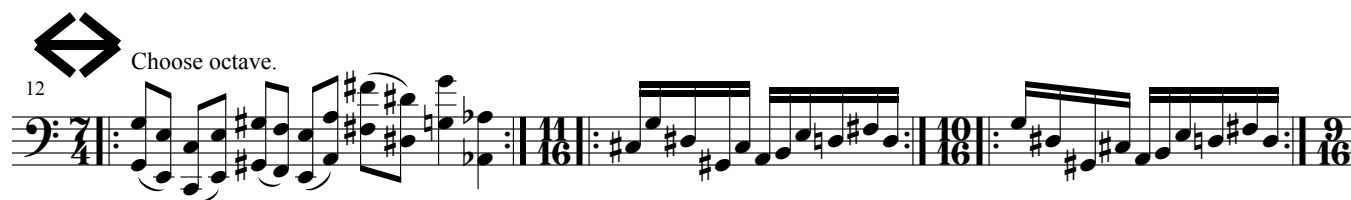
Bs. C



Bs. C



Bs. C



Bs. C



Bs. C

